

# SIMPACTOR®

The **Sturtevant Simpector®**, a centrifugal, pin-type impact mill, reduces low- to medium-density materials to uniform fine particle size of 50-325 mesh.

- Simple; ease of maintenance
- Economical; low energy consumption with high throughput
- Efficient & effective; uniform, precise grind
- Easy to operate; adjust grind while operating
- Dry or wet grinding
- Gravity or pneumatic feed

## APPLICATIONS

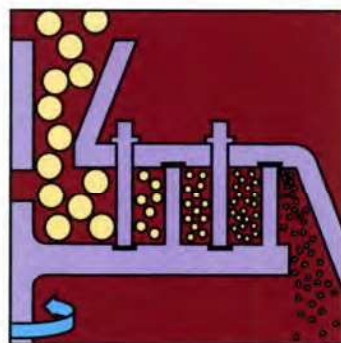
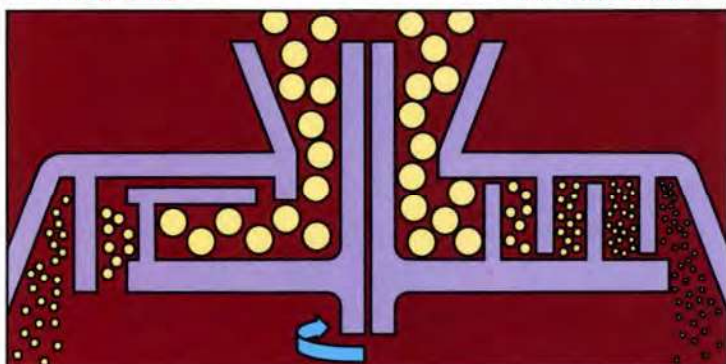
- Sodium bicarbonate
- Talc
- Clays
- Resin
- Gypsum
- Corn slurry
- Stucco
- Starch
- Flour

## INTERCHANGEABLE ROTORS

- Heavy-duty
- Standard-duty
- Intermeshing

Heavy-duty

Standard-duty



Centrifugal forces move material through alternating stationary and rotating pins.



SIMPACTORS					
MODEL	MAX. H.P.	LENGTH	WIDTH	HEIGHT	WEIGHT
3 B	25	54"	26"	52"	1,000 lbs.
6 A	75	72"	36"	70"	2,700 lbs.
40	300	96"	60"	102"	7,000 lbs.